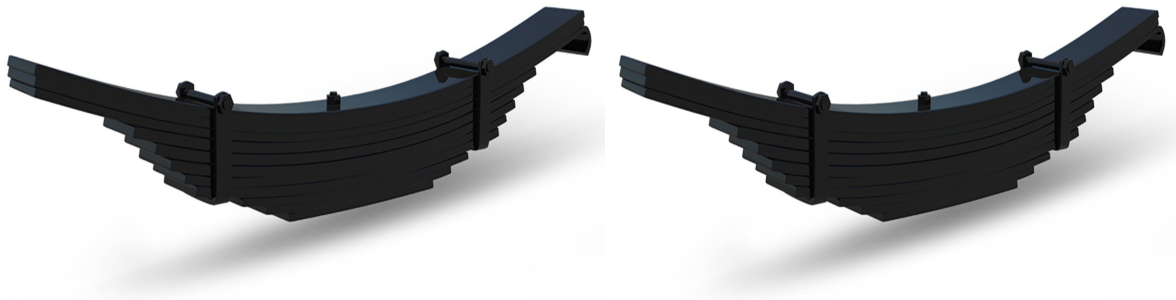


## Leaf Springs

Like many auto parts, you will never know you need a leaf spring until it breaks or wears down. For centuries we've been used to the luxury of relatively smooth transportation. The credit goes to the brilliant invention of leaf springs. Agriculture leaf springs manufacturer India describes the actual use of leaf springs.



### Are Leaf Springs Used in Farming?

By their invention, leaf springs can be used to support farm equipment. During medieval times, leaf springs were used for agriculture and it was a major industry leader. Honestly, leaf spring made it easier and faster for farmers to haul and transport goods for trade. Being one of the leaders of agriculture leaf springs manufacturers, the same concept is used in today's farming though the design of the agriculture leaf springs has improved.

### Agriculture Leaf Spring Specification :

1. Size: 120\*14-11mm
2. Material: SUP9
3. OEM NO.: 200029
4. Weight: 127.50kg

### Are Leaf Springs Used in Industrial Equipment?

Construction vehicles would not be able to carry heavy loads without the use of agriculture leaf springs. Construction vehicles need to carry heavy goods like brick, stone, concrete, and other massive materials. If the vehicle isn't designed to support overbearing loads, it will not carry out its duty no matter how large a vehicle is, resulting in breakdowns and unnecessary costs.

Agriculture leaf springs are the most economical suspension solutions for commercial vehicles. Now we can find leaf springs in the latest modern commercial vehicles though they have a history of more than 100 years. Each vehicle manufacturer develops its own solution for leaf spring support and many of them are not applicable to any vehicle platform.